

ACCU ELECTRIC MOTORS INC

USA: (888) 932-9183

CANADA: (905) 829-2505

- ✓ Over 100 years cumulative experience
- ✓ 24 hour rush turnaround / technical support service
- ✓ Established in 1993



The leading independent repairer of servo motors and drives in North America.

Visit us on the web:

www.servo-repair.com

www.servorepair.ca

www.ferrocontrol.com

www.sandvikrepair.com

www.accuelectric.com

Scroll down to view your document!

For 24/7 repair services :

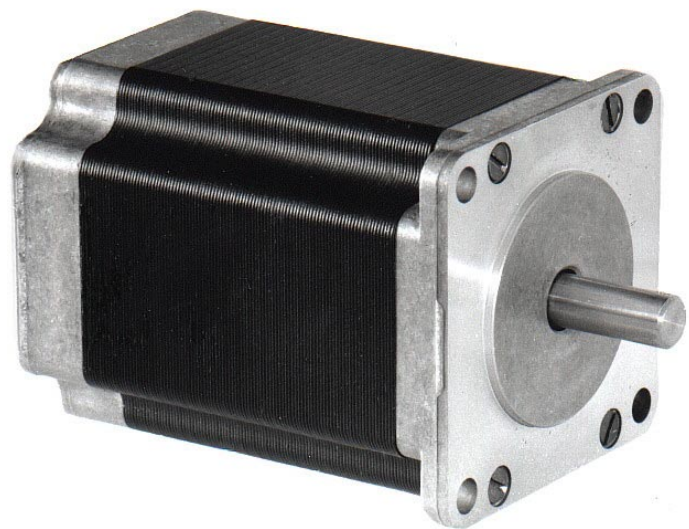
USA: 1 (888) 932 - 9183

Canada: 1 (905) 829 -2505

Emergency After hours: 1 (416) 624 0386

Servicing USA and Canada

High-Performance Stepper Motors HS200 Series



- **2-phase Hybrid Step Motor in Frame Size NEMA 23**
- **Holding Torque from 0,4 up to 1,6 Nm**
- **Peak Torque up to 2,8 Nm**
- **Full Step Angle 1,8°**
- **Direct Heat Dissipation from the Lamination**
- **Noise and Vibration optimized Shape of Lamination**
- **Linear Torque of up to 2,5 Times of the rated Current for short Acceleration/Deceleration Periods**

Technical Data (Standard Types)

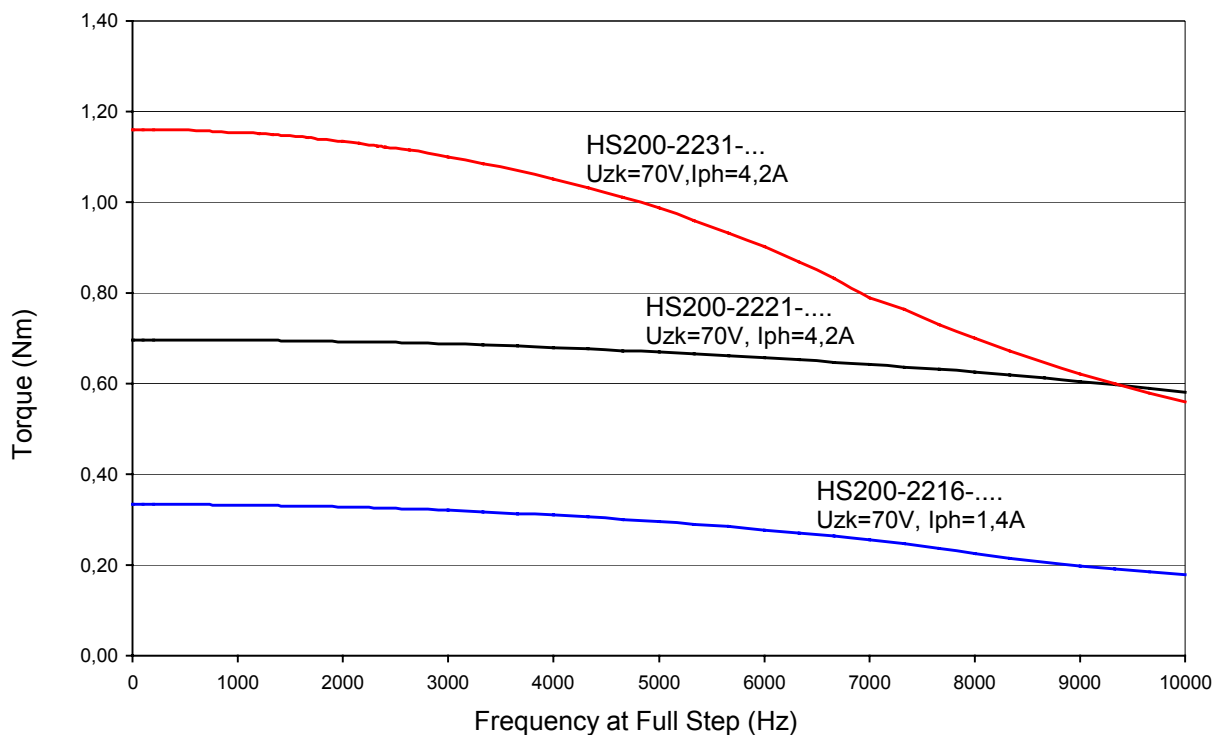
	HS200-2231-0300AX08				
	HS200-2221-0300AX08				
	HS200-2216-0100AX08				
Holding Torque (bipolar, 2 phases parallel connected)	M _H	Nm	0,47	0,98	1,63
Rated Current Phase (bipolar parallel)	I	A	1,4	4,2	4,2
Rated Current Phase (bipolar serial)	I	A	0,7	2,1	2,1
Step Angle		°	1,8	1,8	1,8
Angular Tolerance		%	5	5	5
Resistance per Phase	R _{ph}	Ω	4,6	0,7	1,1
Inductance per Phase	L _{ph}	mH	4,6	0,9	1,7
Residual Torque	M _P	Nm	0,02	0,04	0,07
Insulation Class			B	B	B
Rotor Inertia	J	Kgm ² 10 ⁻³	0,008	0,022	0,034
Mass	m	kg	0,5	0,7	1,0

Standard Version: NEMA 23, smooth shaft
8 flying leads for serial or parallel connection

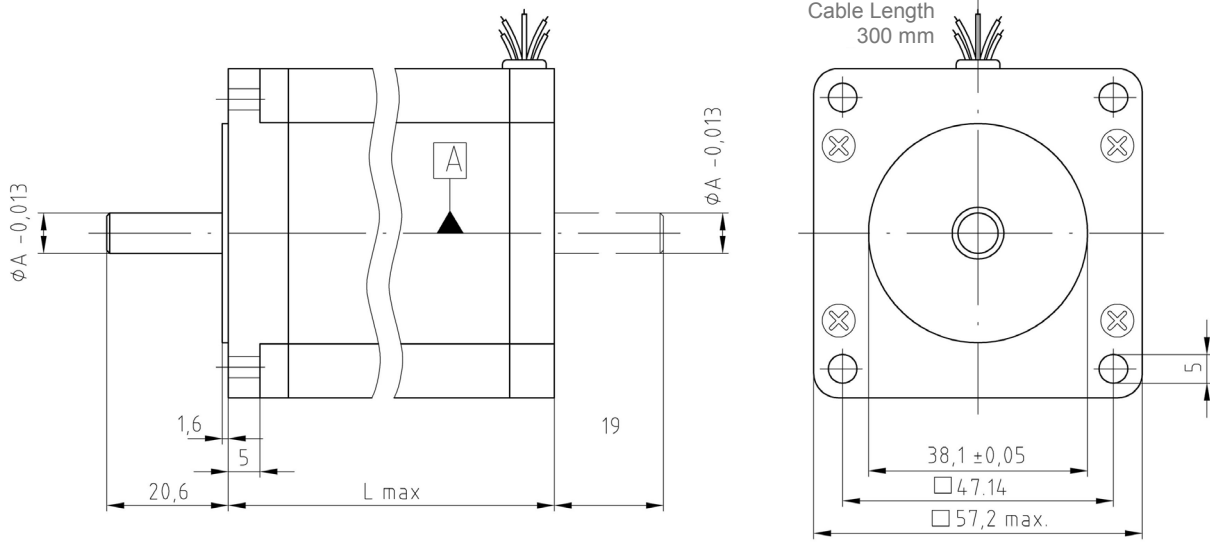
Further types and options for those series as well as stepper drives and other accessories are available upon request.

Torque Characteristics

(Connection bipolar, parallel)



Dimensions



all dimensions in mm

	Length (Lmax)	Shaft (ϕA)
HS200-2216	41 mm	6,35 mm
HS200-2221	55 mm	6,35 mm
HS200-2231	77 mm	8 mm

subject to change without notice

Sales and Service

We are committed to quality customer service. In order to serve you in the most effective way please contact your local sales representative for assistance.

If you do not know the local sales representative please contact our customer support.

Danaher Motion Customer Service Stepper Products Europe

Eduard Bautz GmbH & Co. KG
Robert-Bosch-Strasse 10
D-64331 Weiterstadt

Phone	+49(0)6151-8796-10
Fax	+49(0)6151-8796-123
E-Mail	bautz@danaher-motion.de

Visit the european Danaher Motion Website at **www.Danaher-Motion.de** for further information about Danaher Motion and our product range.