

ACCU ELECTRIC MOTORS INC

USA: (888) 932-9183

CANADA: (905) 829-2505

- ✓ Over 100 years cumulative experience
- ✓ 24 hour rush turnaround / technical support service
- ✓ Established in 1993



The leading independent repairer of servo motors and drives in North America.

Visit us on the web:

www.servo-repair.com

www.servorepair.ca

www.ferrocontrol.com

www.sandvikrepair.com

www.accuelectric.com

Scroll down to view your document!

For 24/7 repair services :

USA: 1 (888) 932 - 9183

Canada: 1 (905) 829 -2505

Emergency After hours: 1 (416) 624 0386

Servicing USA and Canada

be in motion **be in motion**

DSD DS DA DST DSL DSD-IPG BPx

7000 8000 9000 10000

Motors

10 20 30 40 50 60 70 80 90 100 110 120



DSD 22 - 100
Dynamic Motors

DS 45 - 200
DA 100 - 225
General Purpose

4

6

2

2.02 2.04 2.06 2.08 2.10 2.12 2.14 2.16 2.18 2.20 2.22 2.24 2.26 2.28 2.30 2.32 2.34 2.36 2.38 2.40 2.42 2.44 2.46 2.48 2.50



Baumüller supplies intelligent drives for the world's machines

Any company that develops intelligent, future-oriented machine concepts has to increasingly opt for interdisciplinary co-operation – often beyond corporate boundaries. Maximum performance requires specialization and concentration of all energies on the respective module. Thus, we as a system partner to machine builders do not offer just a drive or a controller. We are always interested in the functioning system as a whole and naturally its optimization by means of our products and services. Therefore, we focus on research conducted at the Baumüller Laboratories. That is where we develop modern solutions for drive and automation technology.

Our approach is acclaimed throughout almost all sectors of machine building. We plan, develop and manufacture optimized drive and automation systems for different applications – ranging from the one-off machine to the large-scale production machine. In addition, we offer entire drive systems, from the control cabinet and open-loop control device to converters and motors. In doing so, we assist our customers when a system is being commissioned with extensive engineering, as well as support and service. That also applies to the actual operation.

Technical expertise, innovation, flexibility and absolute customer orientation are the distinctive features of our corporate philosophy. This is also reflected in our motto: be in motion.

You will find up-to-date information, dates and projects when you visit:

www.baumueller.com

DST 135 – 315
High-Torque Motors

10

DSL 56
Linear Servo Motors

12

DSD 45-IPG
Gear Motors

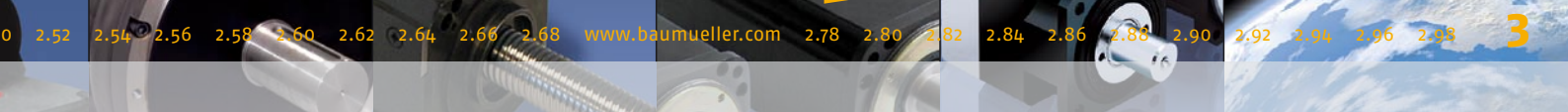
14

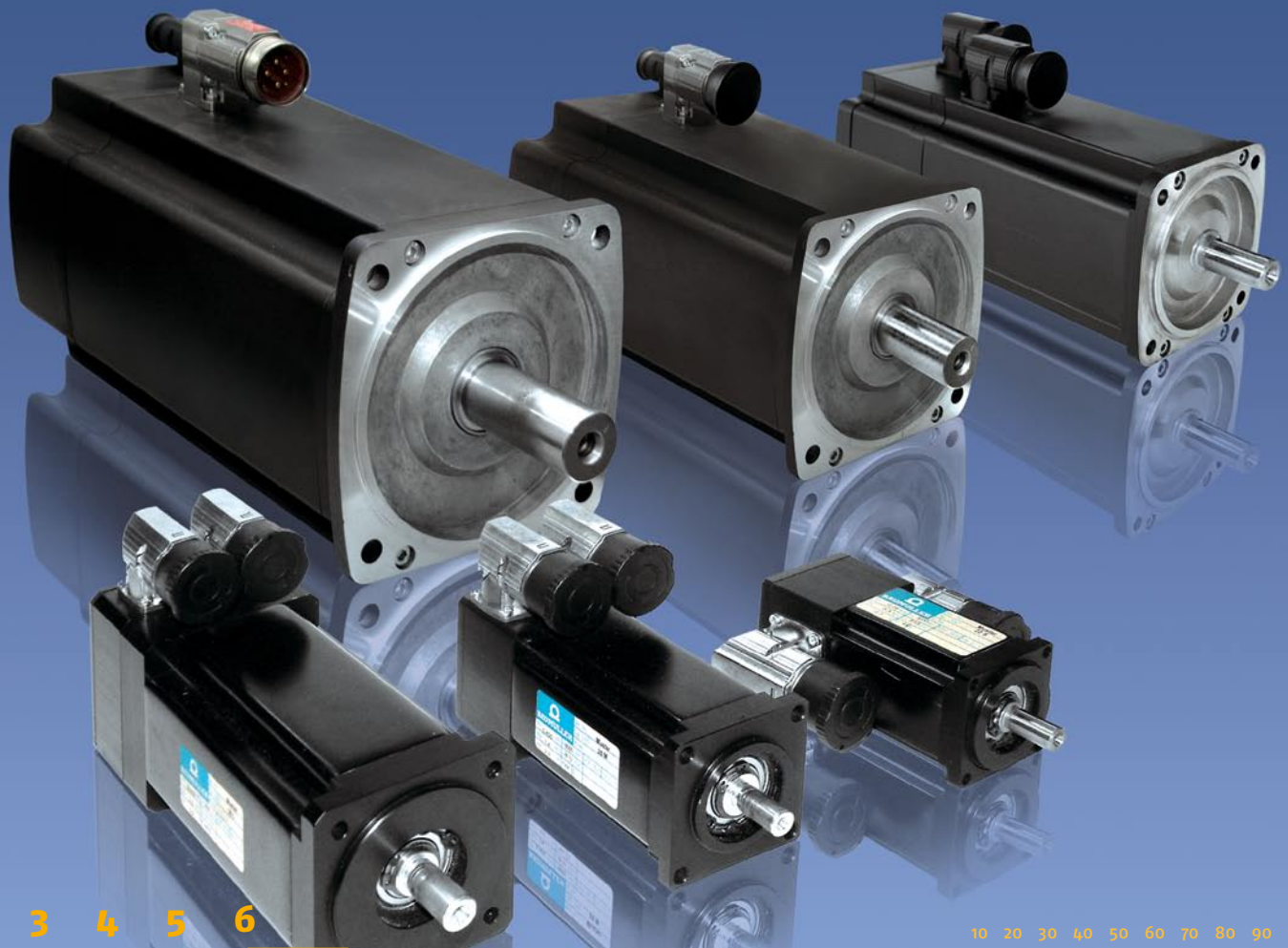
BPx
Planetary Gearing

16

Baumüller: Your partner
For Automation

20





1 2 3 4 5 6

10 20 30 40 50 60 70 80 90 100 110 120

8 9 10 11 12 13 14 15 16 17 18 19

1000 2000 3000 4000 5000

The seven installation sizes for the DSD-range of Baumüller offer a suitable solution for almost every application in the automation.

DSD – Dynamic Motors

The servo motors for highly dynamic applications with the highest requirements of acceleration capacity and the best start-stop qualities, such as for:

- ⊙ packaging machines
- ⊙ textile machines
- ⊙ plastics machines
- ⊙ handling machines
- ⊙ special machines
- ⊙ small robots

DSD 22 – 100 – Dynamic Motors

- ⊙ high torque accuracy
- ⊙ high speed
- ⊙ almost no cogging effect
- ⊙ compact frame size with high power density
- ⊙ maximum dynamic response due to excellent torque – inertia ratio
- ⊙ smooth housing surface – not easily soiled
- ⊙ sleek, uniform housing
- ⊙ permanent field synchronous servo motors
- ⊙ main connection via terminal box or connector (DSD 22 – 45 only via connector)
- ⊙ IP44, other protection type on request (DSD 22 – 36)
- ⊙ IP65 non-ventilated, IP54 surface-ventilated with fan (DSD 45 – 100)
- ⊙ encoders: resolver 2-pole, SinCos-encoder (optional)
- ⊙ more encoders available on request
- ⊙ all types optionally with brake



The DSD-range is available with air-cooling option.



DSD 22 – 100 – Technical Data

	DSD 22	DSD 28	DSD 36	DSD 45	DSD 56	DSD 71	DSD 100
P_N [kW]	0.25	0.52	1.25	1.37	5.4	10.1	17
n_M [min ⁻¹]	6000	6000	6000	4500	4500	4500	4500
J [kgcm ²]	0.10	0.20	0.44	1.9	5.7	16.5	77
M_0 [Nm]	0.70	1.40	3.30	5.20	15.5	34.5	89
M_{0max} [Nm]	2.8	5.6	13.2	25	52	100	210

	DSD 22	DSD 28	DSD 36	DSD 45	DSD 56	DSD 71	DSD 100
P_N [hp]	0.34	0.70	1.68	1.8	7.2	13.5	22.8
n_M [min ⁻¹]	6000	6000	6000	4500	4500	4500	4500
J [lb in ²]	0.03	0.07	0.15	0.65	1.9	5.6	26.3
M_0 [lbf ft]	0.52	1.03	2.43	3.8	11.4	25.4	65.6
M_{0max} [lbf ft]	2.07	4.13	9.74	18	38	74	155

Subject to alterations. The stated data are maximum values.
For details please have a look in the technical documentations.



45

46 47 48 49 50 51 52 53 54 55 56 57 58 59

With a shaft height from 45 to 225 Baumüller offers the largest product range of synchronous and asynchronous motors.

DS / DA - Motors

The servo motor for dynamic applications with highest requirements of capacity and torque, such as for

- ⊙ printing machines
- ⊙ packaging machines
- ⊙ textile machines
- ⊙ plastics machines
- ⊙ handling machines
- ⊙ special machines
- ⊙ general mechanical engineering

DS 45 – 100 – General Purpose (Synchronous)

- ⊙ high torque accuracy
- ⊙ high speed
- ⊙ minimal space required due to compact design
- ⊙ virtually wear- and maintenance free due to brushless design
- ⊙ permanent field servo motors
- ⊙ IP64/65 non-ventilated, IP54 surface-ventilated
- ⊙ encoders: resolver 2-pole, SinCos-encoder (optional)
- ⊙ other encoders available on request
- ⊙ all types optionally with brake



The DS-range is also available with air-cooling option.



180 200 225



DS 45 – 100 – Technical Data

		DS 45	DS 56	DS 71	DS 100
P_N	[kW]	1.26	5.80	11.80	23.56
n_M	[min ⁻¹]	6000	6000	6000	4000
J	[kgcm ²]	3.4	15.7	50.2	175
M_0	[Nm]	3.2	13.2	31.0	84.0
M_{0max}	[Nm]	15	32	73	160

		DS 45	DS 56	DS 71	DS 100
P_N	[hp]	1.7	7.8	15.8	31.6
n_M	[min ⁻¹]	6000	6000	6000	4000
J	[lb in ²]	1.16	5.36	17.15	59.80
M_0	[lbf ft]	2.4	9.7	22.9	62.0
M_{0max}	[lbf ft]	11	24	54	118

Subject to alterations. The stated data are maximum values.
For details please have a look in the technical documentations.

DS 100 – 200 – General Purpose (Synchronous)

- ⊙ high torque accuracy
- ⊙ high speed
- ⊙ compact and robust design
- ⊙ sized with a high level of efficiency
- ⊙ permanent field servo motors
- ⊙ IP23 internally ventilated, IP54 surface-ventilated, unventilated
- ⊙ water-cooled model available (IP54)
- ⊙ encoders: resolver 2-pole, SinCos-encoder (optional)
- ⊙ other encoders available on request
- ⊙ all types optionally with brake



The DS-main drives are available as air- and water cooled model.



DS 100 – 200 – Technical Data

		DS 100	DS 132	DS 160	DS 200
P_N	[kW]	38	92	150	290
n_M	[min ⁻¹]	3000	3000	3000	2700
J	[kgcm ²]	220	840	2500	7900
M_0	[Nm]	320	680	1180	1350
M_{0max}	[Nm]	320	680	1180	2120

		DS 100	DS 132	DS 160	DS 200
P_N	[hp]	51	123	201	389
n_M	[min ⁻¹]	3000	3000	3000	2700
J	[lb in ²]	75	287	854	2700
M_0	[lbf ft]	236	502	870	996
M_{0max}	[lbf ft]	236	502	870	1564

Subject to alterations. The stated data are maximum values.
For details please have a look in the technical documentations.

DA 100 – 225 – General Purpose (Asynchronous)

- ⊙ model as asynchronous cage rotor
- ⊙ large field weakening range
- ⊙ high level of efficiency
- ⊙ compact and robust design
- ⊙ high torque accuracy
- ⊙ IP23 internally ventilated, IP54 surface-ventilated with fan
- ⊙ IP54 water-cooled model available
- ⊙ encoders: resolver 2-pole, SinCos-encoder (optional)
- ⊙ all types optionally with brake



The DA-main drives are available as air- and water cooled model.



DA 100 – 225 – Technical Data

		DA 100	DA 132	DA 160	DA 180	DA 225
P_N	[kW]	15	50	120	200	265
n_M	[min ⁻¹]	3000	3000	3000	3000	3000
J	[kgcm ²]	340	1200	3460	6760	20630
M_0	[Nm]	67	215	573	955	1862
M_{0max}	[Nm]	134	344	917	1528	2979

		DA 100	DA 132	DA 160	DA 180	DA 225
P_N	[hp]	20	67	161	268	355
n_M	[min ⁻¹]	3000	3000	3000	3000	3000
J	[lb in ²]	116	410	1182	2310	7050
M_0	[lbf ft]	49	159	423	704	1373
M_{0max}	[lbf ft]	99	254	676	1127	2197

Subject to alterations. The stated data are maximum values.
For details please have a look in the technical documentations.



11500 12000 12500 13000

13100 13200 13300 13400 13500

13500

13505 13510 13515 13520 13525

Baumüller offers the DST-range up to 13500 Nm torque and herewith provides the maximum dynamic in the direct drive technology.

DST High-Torque Motors

The high-torque synchronous motors for application with maximum torque requirements, such as for:

- ⊙ plastics machines
- ⊙ rotary tables or swivel axis
- ⊙ printing machines
- ⊙ machine tools
- ⊙ woodworking machines
- ⊙ special machines

DST 135 – 315 – Powerful High-Torque Motors

- ⊙ appropriate for demanding direct drive technology
- ⊙ high torques at low speeds
- ⊙ low noise
- ⊙ heat dissipation at source due to water cooling
- ⊙ compact and robust design
- ⊙ smooth housing surface – not easily soiled
- ⊙ permanent field servo motors
- ⊙ degree of protection IP54
- ⊙ encoders: resolver 2-pole, SinCos-encoder (opt.)
- ⊙ other encoders available on request



The DST-high-torque motors are available as water-cooled model



13600 13700 13800



DST 135 – 315 – Technical Data

		DST 135	DST 200	DST 315
P_N	[kW]	30.5	71	175
n_M	[min ⁻¹]	750	450	300
J	[kgm ²]	0.28	1.3	11.6
M_0	[Nm]	845	3450	13500
M_{0max}	[Nm]	845	3450	13500

		DST 135	DST 200	DST 315
P_N	[hp]	40.9	95.2	234.7
n_M	[min ⁻¹]	750	450	300
J	[lb ft ²]	6.64	30.8	275.3
M_0	[lbf ft]	623	2545	9957
M_{0max}	[lbf ft]	623	2545	9957

Subject to alterations. The stated data are maximum values.
For details please have a look in the technical documentations.



3 4 5 6 7

2000 3000 4000 2000 3000 4000

2

49 50 51 52 53 54 55 56

167 250 333

With its two variants the DSL 56 ensures optimal linear motions. As a roller screw assembly for high forces and high velocities or as a ball screw assembly in simple applications for low-cost linear drives.

DSL 56 – Three-Phase Synchronous Linear Actuator

Compactness, dynamic response and high levels of torque, effectively implemented in a linear motion – these are the features of the DSL 56.

With its integrated screw assembly the DSL 56 converts rotary motion to linear motion. The link between Baumüller servo motors and an integrated screw assembly is ideally suited for applications with maximum demands in terms of force and dynamic response, in a compact design.

There are two models available: the roller screw assembly for high forces and high velocities or the lower-cost ball screw assembly for simpler applications. Consequently, the DSL 56 optimally meets the requirements of fields of application such as robotics, welding tongs and handling but also in the printing and plastics industries.

DSL 56 – Linear-Servo Drives

- ⊙ drive-shaft support for high radial forces
- ⊙ alternatively ball screw, respectively planetary screw assembly
- ⊙ spindle drive can be replaced without motor disassembly
- ⊙ brake assembly without changing total length
- ⊙ high dynamics and maximum force due to servo technology
- ⊙ multiple ways of installation according to IEC34-7 – IM 3689 / IM 9389
- ⊙ encoder system standard resolver 2-pole (other encoder type on request)
- ⊙ aluminum case
- ⊙ degree of protection IP54
- ⊙ all types optionally with brake



The DSL linear-servo drive is available as air-cooled model

2000 3000 4000



DSL 56 – Technical Data

		threaded spindle drive 21x5			ball screw 32x5
		DSL 56 M	DSL 56 M	DSL 56 M	DSL 56 M
n_M	$[\text{min}^{-1}]$	2000	3000	4000	2000
F_0	$[\text{kN}]$	6.0	6.0	6.0	6.0
$F_{0\text{max}}$	$[\text{kN}]$	20	20	20	7.0
v_N	$[\text{mm/s}]$	167	250	333	167

		threaded spindle drive 21x5			ball screw 32x5
		DSL 56 M	DSL 56 M	DSL 56 M	DSL 56 M
n_M	$[\text{min}^{-1}]$	2000	3000	4000	2000
F_0	$[\text{lbf}]$	1349	1349	1349	1349
$F_{0\text{max}}$	$[\text{lbf}]$	4496	4496	4496	1574
v_N	$[\text{in/s}]$	6.55	9.84	13.1	6.55

rated torque brake: 15 Nm, lifetime: >10m double strokes, stroke: 155 mm, allowed radial load: >200 N
 Subject to alterations. The stated data are maximum values. For details please have a look in the technical documentations.



1 2 3 4 5 6 7

10 20 30 40 50 60 70 80 90 100 110 120

8

5 6 7 8 9 10 11 12 13 14 15 16 17 18 19

1000 2000 3000 4000 5000

The new geared motor from Baumüller, the DSD 45-IPG, is distinguished by its high torque and excellent dynamic response qualities. Offering transmission ratios of $i=4$ and $i=8$, the DSD 45-IPG is a compact and dynamic motor that meets the highest torque requirements.

DSD 45-IPG Three-Phase Synchronous Geared Motor

Thanks to the integrated planetary gearing, the DSD 45-IPG is ideal for high torque applications that require a high dynamic response.

The DSD has an overload capacity that is up to 40% greater than in comparable servomotors in the DS series. With these qualities, the DSD 45-IPG is the perfect candidate for handling, robotics and packaging applications.

In spite of the transmission ratios of $i=4$ and $i=8$, the motor fully retains its dynamic characteristics. The extremely compact DSD 45-IPG paves the way for optimal space utilization. Several axes can, for example, be placed side by side in a space-saving manner. Depending on the application, Sincos encoders or brakes can be combined with the gearing.

DSD 45-IPG – Geared Motors

The concept offers:

- ⊙ high output torque
- ⊙ high dynamic response
- ⊙ low moment of inertia
- ⊙ compact frame size
- ⊙ sleek, uniform housing
- ⊙ smooth housing surface – not easily soiled
- ⊙ optimized transmission stepping
- ⊙ high protection type IP65
- ⊙ encoder system standard resolver 2-pole (other encoder type on request)
- ⊙ all types optionally with brake

Features of the integrated planetary gearing include:

- ⊙ low circumferential backlash (< 3')
- ⊙ high stability
- ⊙ high efficiency (98%)
- ⊙ transmission ratios $i = 4$ und $i = 8$
- ⊙ low noise level (< 65 dBA)
- ⊙ any required mounting position
- ⊙ lifetime lubrication



The DSD 45-IPG is available as air-cooled model



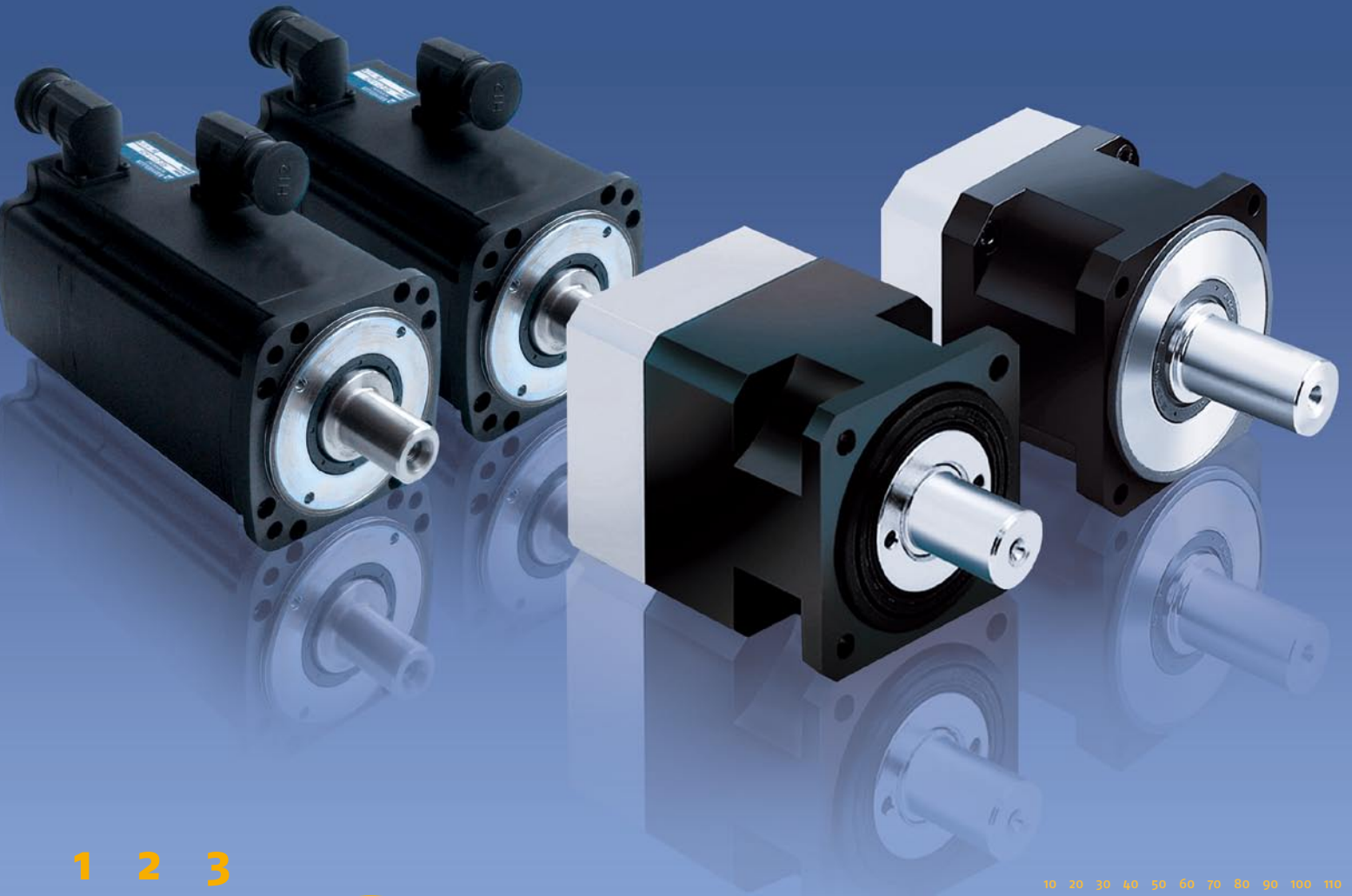
Capacity	<input type="radio"/>	<input checked="" type="radio"/>	<input type="radio"/>
Torque	<input type="radio"/>	<input checked="" type="radio"/>	<input checked="" type="radio"/>
Acceleration	<input type="radio"/>	<input checked="" type="radio"/>	<input checked="" type="radio"/>

DSD 45-IPG – Technical Data Motor / Gear

		DSD 45-IPG4		DSD 45-IPG8	
P_N	[kW]	1.22	1.37	1.22	1.37
n_M	[min ⁻¹]	750	1125	375	562
J	[kgcm ²]	0.12	0.12	0.23	0.23
M_0	[Nm]	20.4	20.4	40.8	40.8
M_{0max}	[Nm]	98	98	108	108

		DSD 45-IPG4		DSD 45-IPG8	
P_N	[hp]	1.64	1.84	1.64	1.84
n_M	[min ⁻¹]	750	1125	375	562
J	[lb in ²]	0.041	0.041	0.079	0.079
M_0	[lbf ft]	15.05	15.05	30.1	30.1
M_{0max}	[lbf ft]	72.3	72.3	79.7	79.7

Subject to alterations. The stated data are maximum values.
For details please have a look in the technical documentations.



10 20 30 40 50 60 70 80 90 100 110 120

3

The three models standard, economy und high performance of the Baumüller planetary gearings provide compact and economical drive solutions at the highest technology level.

BPx – Baumüller Planetary Gearing Range

In connection with our standard DS/DSD servo drives, the BPx – planetary gear range is optimally suitable for applications that require maximum standards of torque and dynamics. In combination with a high number of transmission ratio gradings, almost any possible combination of motor and gear allow an optimal adaptation of customized application.

Three models are available:

- ⊙ gear models in the so-called HP (= High Performance) version are available for highest torques and speeds
- ⊙ for applications with standard requirements the model BPS is a gear solution of a high technology level
- ⊙ the model range BPE (= Economy) is used for basic applications

The feature of the BPx range are:

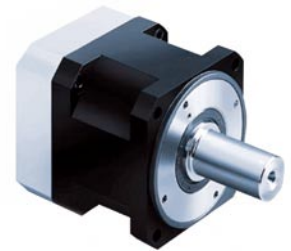
- ⊙ low circumferential backlash (< 3')
- ⊙ high stability
- ⊙ high efficiency (98%)
- ⊙ great choice of gear ratios
- ⊙ low noise level (< 65 dBA)
- ⊙ high quality (ISO 9001)
- ⊙ any required mounting position
- ⊙ lifetime lubrication

In connection with our standard motor ranges DS and DSD the concept offers:

- ⊙ high driving torque
- ⊙ high dynamics
- ⊙ low total moment of inertia
- ⊙ compact design
- ⊙ high protection type IP65



BPF HP



BPS HP

High Performance Range BPx HP

For highest torque speeds, depending on requirement as standard or flange model. The patented system for venting in the gear prolongs the lifetime of the mechanical components. The gears of the BPx range have an optimal connection to the motor shaft due to a special clamping piece. Therewith the concentricity is optimised, the noise is minimised and assembly errors are excluded.



BPx HP – Technical Data

		BPx 36 HP	BPx 45 HP	BPx 56 HP	BPx 71 HP
M_o	[Nm]	110	220	520	1000
$n_{input\ max}$	[min ⁻¹]	10000	8000	7000	6000
i		4 - 64	4 - 64	4 - 64	4 - 64

		BPx 36 HP	BPx 45 HP	BPx 56 HP	BPx 71 HP
M_o	[lbf ft]	81	162	384	738
$n_{input\ max}$	[min ⁻¹]	10000	8000	7000	6000
i		4 - 64	4 - 64	4 - 64	4 - 64

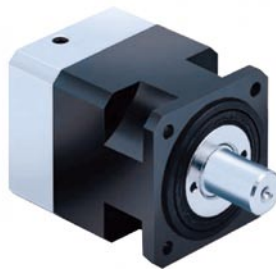
Subject to alterations. The stated data are maximum values.
For details please have a look in the technical documentations.

Standard Range BPS

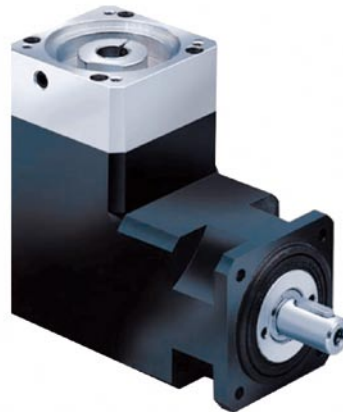
Standard gears for connection to standard flange- and shaft extension of the DS and DSD motor ranges by Baumüller.

Also available as angular gear for applications with interference contour.

BP	X	FS	HP	type code BPx:
				HP High Performance
				FS Frame Size
	X			S = Standard
				SA = Standard Angle
				F = Flange
				E = Economy
				EA = Economy Angle
				EF = Economy Flange
BP				Baumüller Planetary



BPS



BPSA



BPS – Technical Data

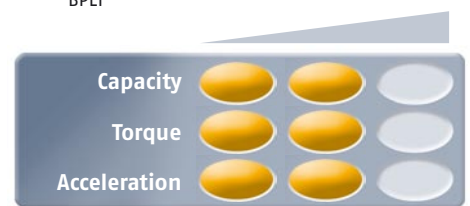
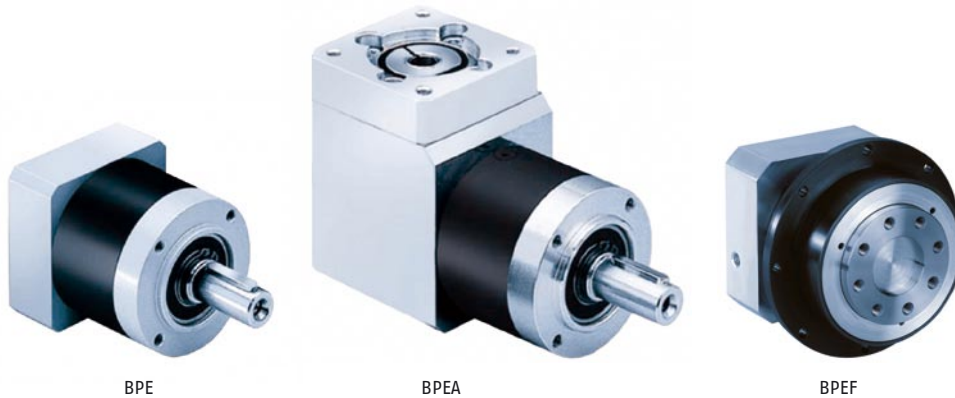
		BPS 36	BPS 45	BPS 56	BPS 71	BPS 100
M_0	[Nm]	77	120	260	910	1800
$n_{input\ max}$	[min ⁻¹]	14000	10000	8500	6500	6000
i		3 - 100	3 - 100	3 - 100	3 - 100	3 - 100

		BPS 36	BPS 45	BPS 56	BPS 71	BPS 100
M_0	[lbf ft]	57	89	192	671	1328
$n_{input\ max}$	[min ⁻¹]	14000	10000	8500	6500	6000
i		3 - 100	3 - 100	3 - 100	3 - 100	3 - 100

Subject to alterations. The stated data are maximum values.
For details please have a look in the technical documentations.

Economy Range BPE

The so-called economy-version (standard or angle) is available for basic applications with low torque and low speed requirements.



BPE – Technical Data

	BPE 20	BPE 30	BPE 40	BPE 45	BPE 56	BPE 60	BPE 80
M_o [Nm]	20	44	130	130	260	260	800
$n_{input\ max}$ [min^{-1}]	18000	13000	7000	7000	6500	6500	6500
i	3 - 512	3 - 512	3 - 512	3 - 512	3 - 512	3 - 512	3 - 512

	BPE 20	BPE 30	BPE 40	BPE 45	BPE 56	BPE 60	BPE 80
M_o [lbf ft]	14.8	32.5	95.9	95.9	192	192	590
$n_{input\ max}$ [min^{-1}]	18000	13000	7000	7000	6500	6500	6500
i	3 - 512	3 - 512	3 - 512	3 - 512	3 - 512	3 - 512	3 - 512

Subject to alterations. The stated data are maximum values.
For details please have a look in the technical documentations.

Planning

Project management

Development

hardware & software engineering

Control cabinet design

Installation

Commissioning

Expansion of existing systems

Technical support worldwide

Training

Service

Maintenance

Retrofit

362 363 364
365

349 350 351 352 353 354 355 356 357 358 359 360 361

18 19 20 21 22 23 24

1 2 3 4 5 6 7

You can always reach us via our service hotline, 24/7: +49 (0) 911 5432 133.

Automation solutions by Baumüller

Co-operation with development partners, who contribute to the entire solution in a system-oriented way, is a pre-condition if you want to concentrate on your own competencies in the field of machine building. If your automation partner supports you during the realization of your system concept, you receive the development, project management and the optimal adaptation of a drive solution from one source.

As an innovative system partner of the capital goods industry, the Baumüller Group is the competent solution provider for automation, electronic and drive technology and control technique during the entire lifetime of a system.

It goes without saying that in addition to our complete package consisting of engineering, installation, commissioning and services, we offer customer service with perfect coverage – namely anywhere in the world and at any time.

We are the partner for your success.



Planning

Together with you we design an economical and technological future-oriented system.

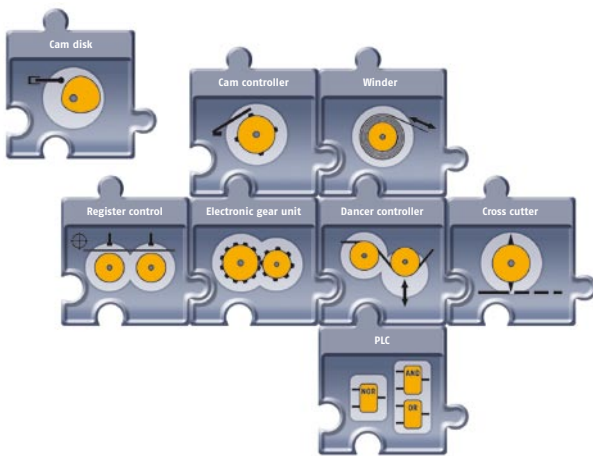
Project management

Our project leaders ensure the implementation of turnkey equipment.

Development

Irrespective of the industry, various motion and control functions occur from time to time in slightly adapted forms.

Baumüller displays these frequently occurring, standardized functionalities in function modules that can easily and quickly be integrated in the system, followed by an adaptation to individual needs.



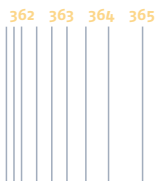
Industry solutions

We know the conditions of your industry and speak the language of your customers. From printing machines with high demand on synchronization of the drives, via control-intensive applications in the plastics industry to the requirements in conveyor technology, assembling and storage systems, we implement system concepts of the most diverse application specifications.



Hardware and software engineering

From the dimensioning via cabling to air conditioning of your control cabinets, we design your hardware taking account of all design and manufacturing options that are technologically innovative, user-oriented and as economical as possible.



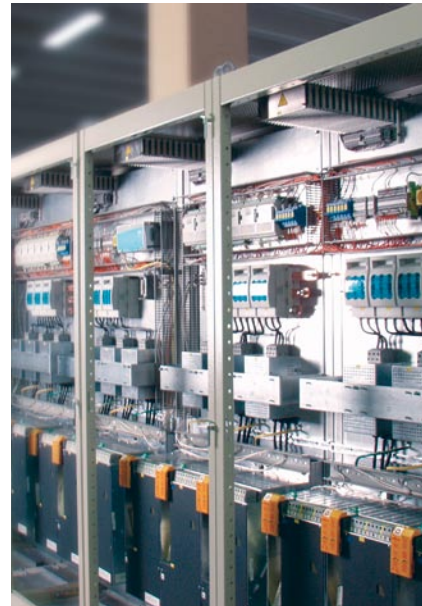
Control cabinet design and wiring

We implement individual and user-oriented solutions from sheet metal production to completely wired control cabinet. Our strengths are special designs and special production in small to medium series.

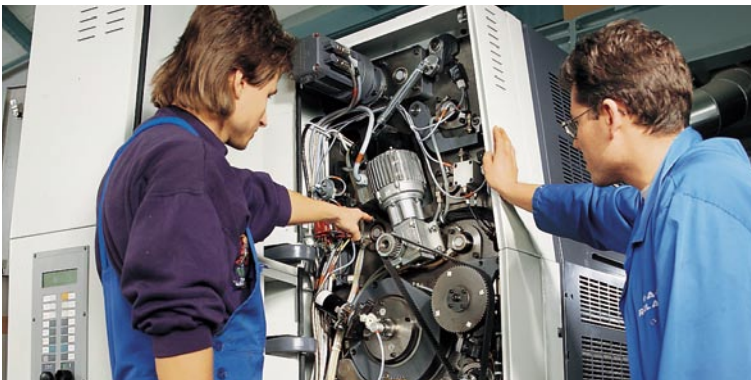
Installation / Commissioning

You construct the mechanics of your system, we install the electronics. Whether inhouse or worldwide at your customers site – with our software solutions and drive technologies we set your machine ideas in motion.

For the worldwide installation and commissioning of your systems, we always take account of the respective country-specific standards.



0.1 0.2 0.3 0.4 0.5 0.6 0.7 0.8 0.9



3 4 5 6 7 8 9 10 11 12 13 14 15

Expansion of existing systems

Innovative and customer-specific products require state-of-the-art production methods and machine functions. Using an adaptation or expansion of your existing machine architecture, you quickly achieve an increased flexibility and availability of your systems – while allowing you to estimate your expenses and manage your investments.

Technical support worldwide

Whether it is remote diagnosis and remote maintenance using telecommunication or the Internet, through our 24-hour hotline or our contact partners at branch offices onsite in more than 40 location worldwide – the experts from Baumüller provide full explanations to all your questions concerning drive and automation solutions.



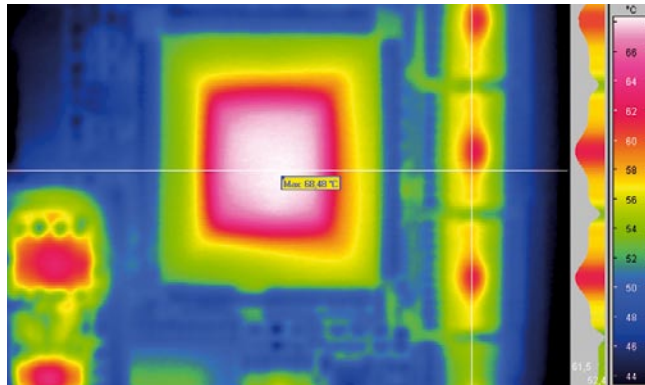
Training

Only with well-trained employees can you quickly respond to a problem. We offer training onsite and in our training center. On the basics of electrical drive engineering, on maintenance of switching stations, controllers and drives, and on selective troubleshooting in the broader range of printing technology and drive engineering. In co-operation with you, we create a flexible training program that is specifically tailored to the training needs of your employees.



Service

The correct repair and spare parts must instantly be available to immediately remedy a failure of your system. In co-operation with you, we develop an extensive service plan and make a technically sound and cost-optimized selection of components that you should keep on hand. We ensure the functional state of your stock of spare parts and deliver components that are missing in an emergency – day and night via express.

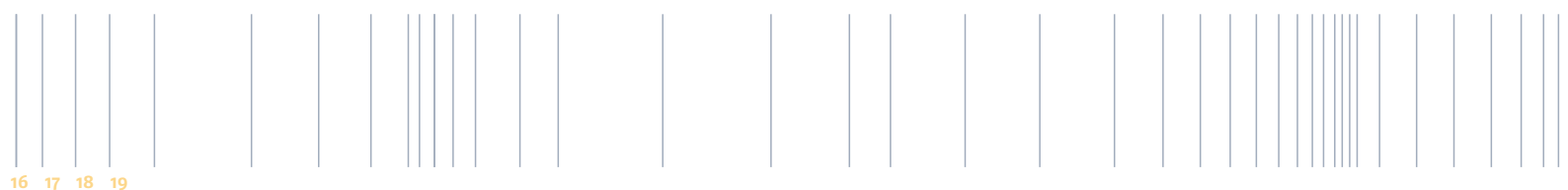


Maintenance

A professionally maintained machine means safety. Safety for the production and safety for your employees. We are your partner for all maintenance of electrics, drive repairs and motor repairs. We recognise in advance any possible causes of failure and increase the availability of your machine – without lost output.

Retrofit

We retrofit existing systems with up-to-date drive systems, control cabinets and user interfaces, so that your system can execute a failure-free, state-of-the-art production. With a retrofit of your existing machine architecture, you are able to achieve higher system flexibility and availability in a very short time.



6 17 18 19

Drive Center National

Darmstadt

Baumüller Nürnberg GmbH
Waldstraße 1 D-64347 Griesheim
T: +49 (0) 6155 84 30-00 F: +49 (0) 6155 84 30-20

Düsseldorf

Baumüller Nürnberg GmbH
Jacob-Kaiser-Str. 7 D-47877 Willich-Münchheide
T: +49 (0) 2154 4 87-0 F: +49 (0) 2154 4 87-59

Dresden

Baumüller Kamenz GmbH
Nordstraße 57 D-01917 Kamenz
T: +49 (0) 3578 34 06-0 F: +49 (0) 3578 34 06-50

Hannover

Baumüller Nürnberg GmbH
Bohlenweg 10 D-30853 Langenhagen
T: +49 (0) 511 77 19 68-0 F: +49 (0) 511 77 19 68-77

Nürnberg / Bavaria

Baumüller Nürnberg GmbH
Ostendstr. 80-90 D-90482 Nürnberg
T: +49 (0) 911 5432-501 F: +49 (0) 911 5432-510

Stuttgart

Baumüller Nürnberg GmbH
Hahnweidstr. 21 D-73230 Kirchheim / Teck
T: +49 (0) 7021 485 57-10 F: +49 (0) 7021 485 57-77

Drive Center International

Australia / Sydney

Baumüller Australia Pty. Ltd. Sydney Office
19 Baker Street, Botany NSW 2019, Sydney
T: +61 2 83350-100 F: +61 2 83350-169

Austria

Baumüller Austria Ges.mbH
Im Bäckerfeld 17, A-4060 Leonding
T: +43 (0) 732 67 44 14-0 F: +43 (0) 732 67 44 14-32

England

Baumüller (UK) Ltd.
14 Redlands Centre, GB-Coulsdon, Surrey CR5 2HT
T: +44 (0) 208-763 2990 F: +44 (0) 208-763 2959

France

Baumüller France S.à.r.l.
Zone de la Malnoue 39, Avenue de l'Europe,
F-77184 Emerainville
T: +33 1 6461-6622 F: +33 1 6461-6006

France

Baumüller France S.à.r.l. (Strasbourg)
9 rue de la Durance, F-67100 Strasbourg
T: +33 (0) 3 88 40 12 51 F: +33 (0) 3 88 40 07 24

India

Baumüller KAT India Pvt. Ltd.
4th Floor, Commerce Avenue, Paud Road, IND - 411 038 Pune
T: +91 20 25 45 96 82 F: +91 20 25 45 96 84

Italy

Baumüller Italia s.r.l.,
Viale Italia 12, I-20094 Corsico (Mi),
T: +39 02 45100-181 F: +39 02 45100-426

The Netherlands

Baumüller Benelux B.V.
Platinastraat 141 NL-2718 SR Zoetermeer
T: +31 (0) 79 3614-290 F: +31 (0) 79 3614-339

Spain

Baumüller Ibérica S.A.
Ausias Marc 13 10 2a, E-08010 Barcelona
T: +34 (0) 93 3426 926 F: +34 (0) 93 2701 321

Switzerland

Baumüller Suisse S.A.
Rue des Usines 22, CH-2000 Neuchâtel
T: +41 (0) 32 7301-260 F: +41 (0) 32 7301-351

Switzerland

Baumüller Schweiz AG (East)
Glärnischstrasse 46, CH-9500 Wil
T: +41 (0) 71 929 46-66 F: +41 (0) 71 929 46-67

Turkey

Baumüller MOTOR KONTROL SISTEM SAN. VE TIC. LTD. STI
Colak Ismail Sok. No: 31/1, TR-81070 Istanbul-Suadiye
T: +90 (0) 216 372-2485 F: +90 (0) 216 372-7570

USA

Baumüller Hartford Inc.
117 West Dudley Town Road, USA-Bloomfield, CT 06002
T: +1 860-243 0232 F: +1 860-286 3080

USA

Baumüller Chicago Corp.
1512 East Algonquin Rd., USA-Arlington Heights, IL 60005
T: +1 847 956-7392 F: +1 847 956-7925

Representatives International

Brazil

NC Service Indústria e Comércio Ltda.
Av. Tamboré, 1217 Barueri-SP, BR-06460-000
T: +55 (0) 11 4195-0502 F: +55 (0) 11 4195-2479

China

Beijing Yanghai Automation Technology Co., Ltd.
Room 1008, No.7, Huaqing Business Building, Iluaqing Garden,
Wudaokou, Haidian District, Beijing 100083, P.R.C.
T: +86 (0) 10 8286 7980 F: +86 (0) 10 8286 7987

China

Sunary Automatic Technology Limited Company
3rd Floor No.476, Chunxiao Rd., Zhangjiang
High-Tech Park Pudong, Shanghai 201203
T: +86 (0) 21 5080 9898 F: +86 (0) 21 5308 7675

Denmark

Robotek EL & Teknik A/S
Blokken 31, Postbox 30, DK-3460 Birkerød
T: +45 4484 7360 F: +45 4484 4177

Finland

Kontram Oy
Olarinluoma 12, P.O.Box 88, FI-02201 Espoo, Finland
T: +358 9 8866 4500 F: +358 9 8866 4799

Korea

BOMAC SYSTEMS
712 Yucheon Factopia 196 Anyang-7 dong, Mananku,
Anyangsi, Kyungkido 430-017, Korea
T: +82 31 467-2030 F: +82 31 467-2033

Poland

Mekeburger Polska
Ul. Kóscielna 39 F/3, PL-60537 Poznań, T: / F: +48 (0) 61 8481 520

Russia, Kazakhstan

Permanent K&M
Wolokolamskoye Chaussee 73, Office 517, Moscow, 125424
T: +7 (095) 9563867 F: +7 (095) 7803429

Sweden

Robotek EI & Teknik
Skårs Led 3, 40313 Göteborg
T: +46 (0) 31 703 71 90 F: +46 (0) 31 703 71 01

Venezuela, Colombia, Ecuador

Nimbus International C.A.
C.C. Parque Tuy, Local P-18, YV-Ocumare del Tuy, 1209
T: +58 (0) 39 25 1347 F: +58 (0) 39 25 7149

Production

Motors

Baumüller Nürnberg GmbH
Ostendstraße 80-90, D-90482 Nürnberg
T: +49 (0) 911 5432-0 F: +49 (0) 911 5432-130

Baumüller Nürnberg GmbH

Werk Kitzingen, Floßhafenstraße 2, D-97318 Kitzingen
T: +49 (0) 9321 700 80 F: +49 (0) 9321 700 888

Baumüller Brno s.r.o.

Skalice nad Svitavou 72, CZ-67901 Skalice nad Svitavou
T: +420 516 499-111 F: +420 516 499-117

Linear motors

Baumüller Kamenz GmbH

Nordstraße 57, D-01917 Kamenz
T: +49 (0) 3578 3406-0 F: +49 (0) 3578 3406-50

Small motors

Baumüller Nürnberg GmbH

Werk Bad Gandersheim
Flugplatzweg 2, D-37581 Bad Gandersheim
T: +49 (0) 5382 9805-0 F: +49 (0) 5382 9805-55

Electronics

Baumüller Nürnberg GmbH

Ostendstraße 80-90, D-90482 Nürnberg
T: +49 (0) 911 5432-293 F: +49 (0) 911 5432-328

Sheet metal forming

Baumüller Dravinja d.o.o.

Delavska cesta 10, SI-3210 Slovenske-Konjice
T: +386 3 75723-00 F: +386 3 75723-32/133

Systems

Baumüller Anlagen-Systemtechnik GmbH & Co. KG

Ostendstraße 84, D-90482 Nürnberg
T: +49 (0) 911 54408-0 F: +49 (0) 911 54408-749

Services

Baumüller Reparaturwerk GmbH & Co. KG

Andernacher Straße 19, D-90411 Nürnberg
T: +49 (0) 911 9552-0 F: +49 (0) 911 9552-999

Baumüller München GmbH

Meglingerstraße 58, D-81477 München
T: +49 (0) 89 748 898-10 F: +49 (0) 89 748 898-75

be in motion be in motion
30 40 42 54 64 84 115 128 173 192 1000 2000 3000 4000 5000 6000

Responsible for content: Baumüller Nürnberg GmbH Ostendstraße 80-90 90482 Nürnberg T: +49 (0) 911 5432-0 F: +49 (0) 911 5432-130 www.baumueller.com
Baumüller Anlagen-Systemtechnik GmbH & Co. KG Ostendstraße 84 90482 Nürnberg T: +49 (0) 911 54408-0 F: +49 (0) 911 54408-719
Baumüller Reparaturwerk GmbH & Co. KG Andernacher Str. 19 90411 Nürnberg T: +49 (0) 911 9552-0 F: +49 (0) 911 9552-999